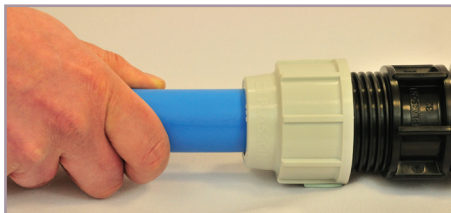


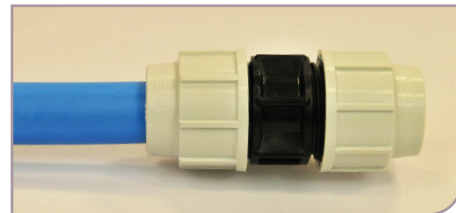
Metric Fittings 20mm - 110mm and Imperial Fittings 1/2" - 2"



Insert liner into pipe (metric 20mm-63mm only) and slacken nut until half the thread is visible.



Push pipe into body, through the nut, split ring, and 'O' ring.



Tighten nut firmly: Hand tight on pipe 20mm (1/2") - 32mm (1"), on pipe 40mm (1 1/4") and above use a PLASSON wrench.

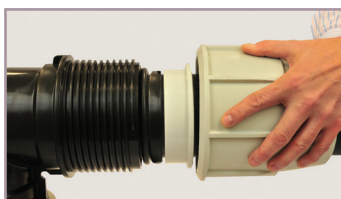
Note: For diameters 40mm and above, chamfering and lubrication of the pipe will ease insertion (use silicon lubricant). Metric fitting shown for illustrative purposes. Imperial fittings have black nuts.



Metric Fittings - 125mm



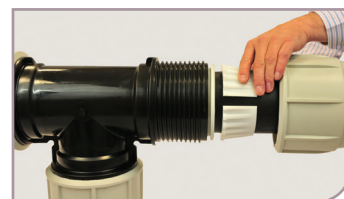
Draw the nut, collars, and 'O' ring over the end of the pipe to a distance of approx. 250mm (put the white split ring to one side for later use).



Insert the pipe into the body of the fitting until it meets the interior stop. Then draw the 'O' ring and collars close to the body of the fitting.



Tighten the nut with a PLASSON wrench until the 'O' ring and collars enter the fitting and reach their end position. Unscrew nut from fitting.



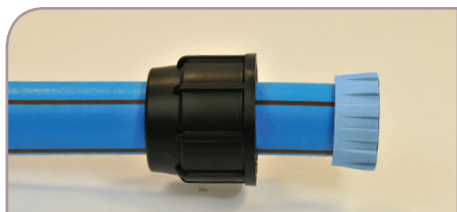
Open the white split ring and mount onto pipe with larger side against the collar ensuring that both parts meet the body of the fitting. Screw the nut tightly onto the fitting using a PLASSON wrench.

Metric Fittings - 160mm

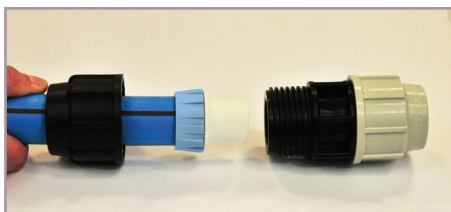
- Undo and take out nuts & bolts.
- Take the two shell halves apart, remove the exposed sleeve & 'O' ring and place over the pipe end.
- Push the body of the fitting completely home over the pipe end.
- Place the two shell halves with grip rings over the pipe & fitting body.
- Insert bolts, washers, and nuts and tighten until the shells are in contact with each other.



PlasShield Adaptor



Remove nut and grip ring from fitting and discard grey nut. Mount black nut onto the pipe and assemble grip ring flush with the pipe end (discard white grip ring and use grey grip ring if provided).



Push the barbed end of the adaptor into the pipe until it meets the stop. Then push the plain end of the adaptor into the fitting until it meets the stop.



Screw nut tightly towards the body of the fitting using a PLASSON wrench.

When used in buried applications, it may be necessary to wrap the fitting with aluminium foil tape & petrolatum tape or waterproof tape as required by your local water utility company.