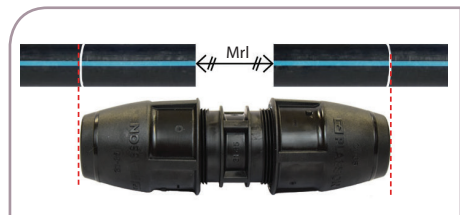


Slide N' Seal Universal Slip Coupler



1. Mark pipe insertion depth. (approximately half the fitting length). Undo nuts 1 to 2 turns while ensuring they remain on the fitting.



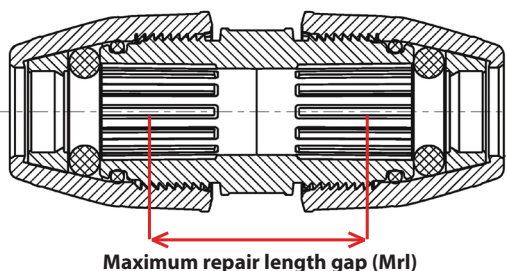
2. Insert each pipe to the marking.



3. Tighten each nut firmly with a Plasson wrench while holding the body with another wrench. The threads should no longer be visible.

Repair Lengths (Mrl)

d (popular pipes)	Mrl	L
19-22 (20mm, ½")	80mm	180
25-28 (25mm, ¾")	90mm	200
31-35 (32mm, 1")	100mm	210
40-43 (40mm, 1¼")	110mm	250
48-51 (50mm, 1½")	120mm	270
60-64 (63mm, 2")	130mm	310



Maximum repair length gap (Mrl)

Pushfit Universal



Prepare the pipe by removing any unsound material adhering to the pipe then cut and de-burr pipe as necessary.

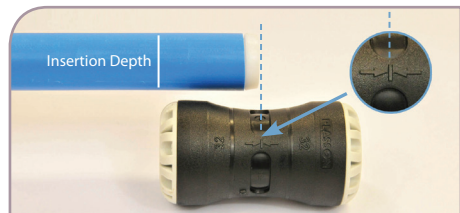


Push the pipe into the fitting up to the internal stop.

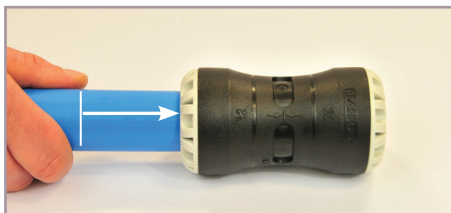


Tighten firmly using a PLASSON wrench or similar.

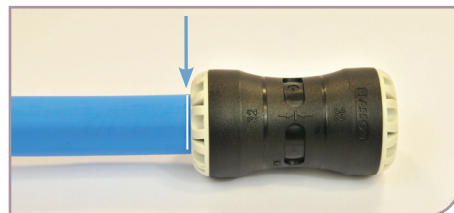
Pushfit assembly



Insert liner into pipe then measure and mark correct insertion depth against fitting as shown.



Push pipe into fitting up to the mark ensuring the pipe has been pushed passed the internal 'O' ring.



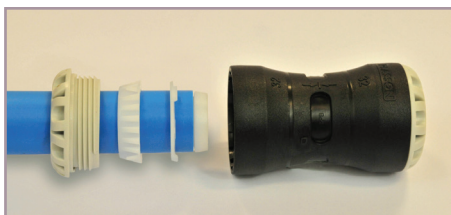
Make sure the mark on the pipe is inline with the end of the fitting.

Note: For assembly of Cu/PB/PEX, follow instructions above but ensure pipe manufacturers liner is fitted where applicable as per their instructions.

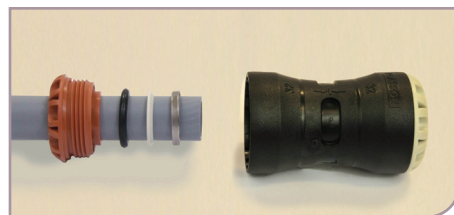
Pushfit disassembly



Using the Pushfit wrench, turn the nut anticlockwise to release pipe from fitting.



If the fitting is to be reused, the split ring, grip ring, and nut MUST be inserted in the order shown.



The metal grip ring in the Cu/PB/PEX fittings MUST be replaced if the fitting is reused. Reassemble in the order shown.